

BLOWDRY EDUCATION CHEAT SHEET



WELCOME

This cheat sheet is a quick-reference guide for professional stylists, covering essential blowdry techniques, tools, and tips to create polished, long-lasting styles with confidence and efficiency.

In this cheat sheet, you'll get pro tips on tool selection, product layering, sectioning strategies, and finishing techniques. It breaks down each step of the blowdry process to help you work smarter, faster, and achieve salon-perfect results every time.

LET'S BEGIN HERE.

Top Tips:

Heat Protection ALWAYS!

Check in with your client --
Make sure they are comfortable.



Brushes



CERAMIC RADIAL

Ceramic Radial brushes are great for thicker hair that may be either very fine and prone to tangles or coarser texture that you are trying to smooth with a silky finish.

The ceramic coating will retain the heat of the drier which helps to dry and style the hair on the underside of the section as it's being pulled through.

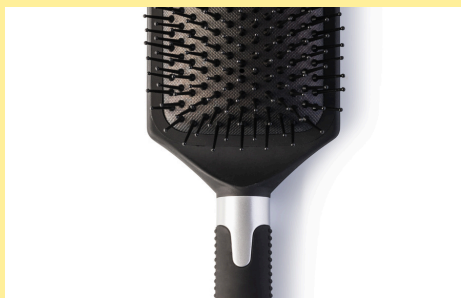
They give off a glass like result and are great for definition with a curly/bouncy blowout.



NATURAL BRISTLE

Boar Bristle brushes are easy to use and will help achieve a soft and voluminous look. Some Natural Bristle brushes have a ceramic coating on the barrel which helps to lock in the heat meaning the results will be smoother than a wooden barrel.

These can be used in all hair types but will give you a different result based on the hairs texture. I prefer using these in hair that has a natural bend or wave



PADDLE AND VENT BRUSHES

Denman is my favourite brand for these. They are fabulous for short hair or longer hair that you just need a little natural volume and will help assist with a naturally straighter result.





PRODUCTS

1) Apply your chosen heat protection and/or benefit creams while the hair is wet and perhaps a detangler before combing or brushing through.

2) After the PreDry (part 6), this is the best time to apply your styling products. When the hair is being Rough dried from wet to 90-95% any products applied will leave the hair with the excess water meaning they are less likely to have full effect.

3) Apply a further layer of heat protectant.

4) Comb or Brush through before sectioning.

BLOWDRY STEPS: THE BLOWDRY BLUEPRINT™



PREDRY - ROUGH DRY TO 90%

- Focus on roots, directing airflow downward.
- Use hands to lift at roots for natural volume.
- Eliminate excess moisture before brushwork.

TENSION LOCK

- Section the hair using my 3 section method.
- Use consistent tension and airflow direction.
- Roll the brush at the root for the tension lock.



COOL LOCK

- Use cool shot to lock in shape after each section.
- Let curls or waves cool in clips for longer hold.



- **Leave a 1-2cm gap between hairdryer and brush.**
- **Work in clean sections to stay efficient.**
- **Layer products intentionally - smoothing and heat protection first, then volumising after the PreDry.**
- **Tension at the root is key!**



Thank you for reading.

Please feel free to follow on my social pages, where you will see the most recent and up-to-date blowdry tips.

